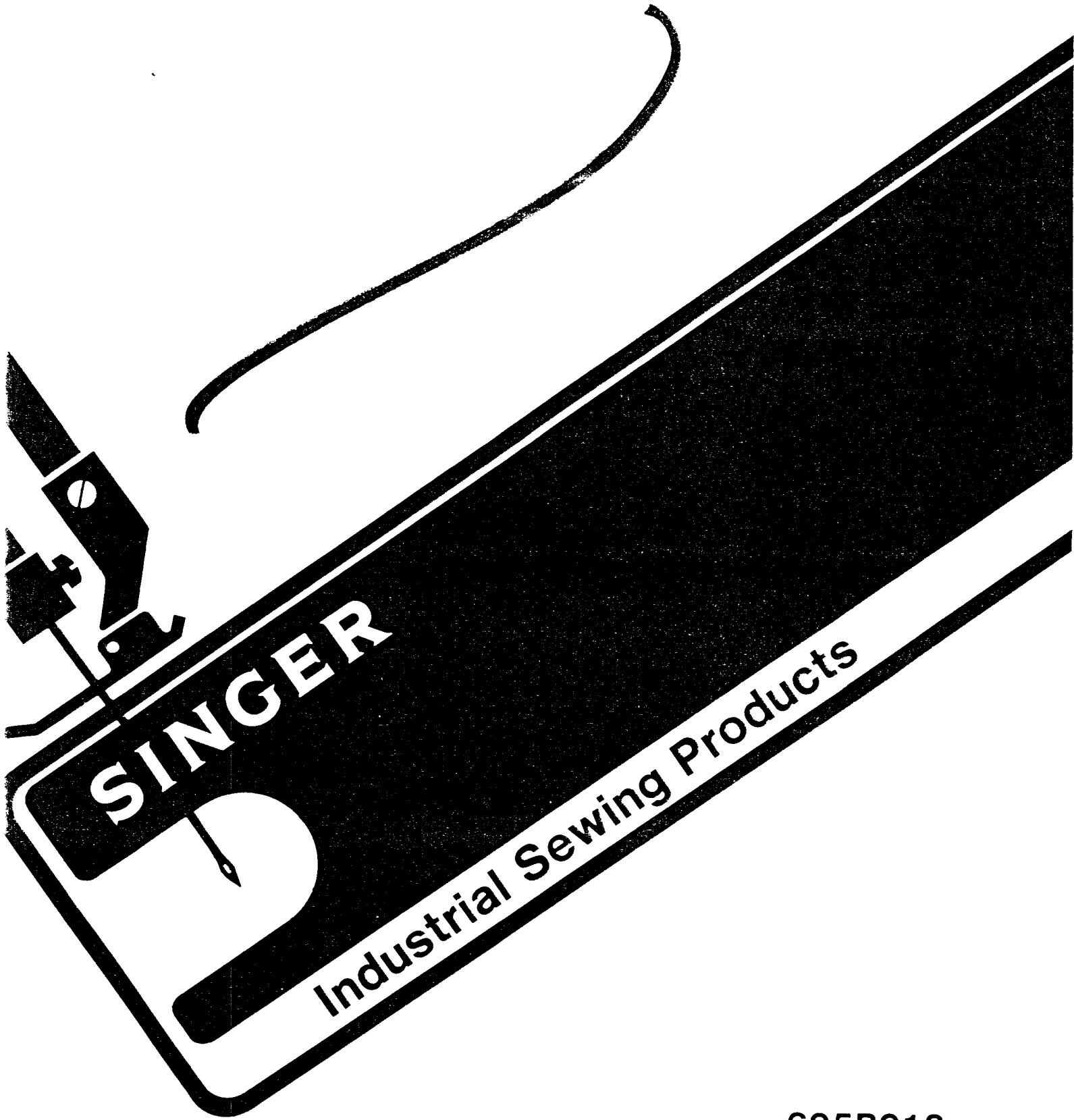


Service Manual and Parts List



695B018

APPLICATION OF CATALOG

IPD

This catalog is a supplement to Catalog 659-78 and should be used in conjunction therewith. Only those parts used on 695B018, but not on 695B016 are illustrated and listed at the back of this catalog. On the page opposite the illustration will be found a listing of the parts with their part numbers, description and the number of pieces required. See pages 14 and 15 for ordering.

References to directions, such as right, left, front, back, etc., are given from the operator's position while seated at the machine. Operating direction of handwheel is away from operator.

Ultra High Speed, Two Curved Blade Needles, Two Loopers, Four Thread Overseaming Machines. Differential Feed, Trimming Mechanism with Spring Pressed Lower Knife, Automatic Lubricating System, Improved Air Cooling System.

695B018 Medium to heavy duty machine for seaming medium to heavy weight knitted and woven fabrics with a modified safety stitch. For operations on pajamas, bathing suits, house dresses, children's wear, ladies' undergarments and similar garments of light to medium heavy weight woven and knitted garments of wool, cotton, silk and synthetics. Seam specification 512-SSa-1. Standard width of seam from left needle 17/64 inch (6.75 mm). Stitch range, 8-20 per inch. Cam adjusted main and differential feeds. Maximum recommended speed 7500 R. P. M.

SPEED RECOMMENDATION

695B machines have been tested in their complete stitch range at their maximum rated speeds. Varied field conditions, severity and cleanliness of the sewing operation may necessitate operating at a lower speed. When operating from 50-100% machine running cycle and a longer than recommended stitch length, it may be necessary to reduce the machine's speed by 10-15%.

The 695B is a precision manufactured and tested sewing machine. To obtain maximum performance, the machine should be operated at 1000 R. P. M. below maximum recommended speed for the first 20 days of field operation. This will minimize readjustment of precision mechanisms.

OILING

CAUTION! Oil was drained from machine when shipped, so reservoir must be filled before beginning to operate. Oil capacity of 695B is eight ounces. Use Singer Type C oil or equivalent.

Machine is filled with oil at spring cap in top cover. Oil level is checked at sight gauge on front of machine. Red bulb on oil level indicator should show between gauge lines when machine is stationary.

Machine is automatically lubricated. No oiling is necessary, other than keeping main reservoir filled. Check oil daily before the morning start; add oil as required.

OILING (Continued)

To maintain maximum recommended speed and serviceability of this equipment when operating continuously, the oil must be changed at least every six months. In no case should oil remain in machine for more than one year.

The oil drain plug screw is located at back of machine near bottom edge of base. It is a magnetic screw designed to accumulate possible foreign materials which may have entered the crank case. It should be removed and cleaned periodically.

NEEDLES

The standard recommended needle is:

Cat. 1431 (set point) available in sizes 7 to 23

Also available are:

Cat. 1431 - Light Ball Point - sizes 7 to 21

Cat. 1434 - Med. Ball Point - sizes 10 to 18

Cat. 1436 - Heavy Ball Point - sizes 8 to 16

Selection of proper needle size is determined by size of thread used. Thread should pass freely through needle eye in order to produce a good stitch formation.

CHANGING NEEDLES

Release pressure on presser foot by turning presser foot release bushing (AG, Fig. 1) and swing presser arm (U) out of position. Turn handwheel in operating direction until needles are at their lowest point of travel. Using hexagonal socket wrench No. 21388 AU, furnished with machine, loosen needle clamp nut about 1/4 turn. Again turn handwheel until needles are at their highest position. Withdraw needles.

To replace needles, leave needle holder at high position and with the flats to the left, insert needles in holder until they rest against stop pin. Keeping needles in this position, turn handwheel until holder is again at its low point of travel; then tighten nut. Return presser arm (U) to position; re-lock presser foot release bushing (AG).

THREAD STAND

After thread comes from cones on cone support (A, Fig. 1), the needle threads are threaded through the back bar of the thread eyelet (B), under the middle bar and through the center holes of the front bar. The looper threads come from the cones, through holes of the middle bar from back to front and then through the two outside holes of the front bar. Next it is threaded through the upper holes of tension thread guide (C) front to back and then through the lower holes from back to front. The threads continue between tension discs (J), through tension post slot (K) in tension post (G) and on through front thread guide (M).

THREADING

Only parts involved in threading are shown in the threading diagram (Fig. 1). Parts are placed in their relative positions for clarity.

It will simplify the threading of these machines to follow the recommended sequence of threading lower looper first, upper looper second, and the needles third.

Before beginning to thread, swing cloth plate open, turn handwheel in operating direction until needles (X) are in high position, release pressure on presser foot by turning presser foot release bushing (AG), and swing presser arm (U) out of position.

Be sure the threads, as they come from the tension thread guide (C), are between the tension discs (J) and in tension post slot (K) in tension post (G). The tension posts should be positioned so the tension post slot will be at the approximate angle for the different threads as indicated in Fig. 1.

TO THREAD LOWER LOOPER

Double end of thread and lead it through both eyes of lower looper thread eyelet (R, Fig. 1) from right to left. NOTE: Thread must pass in front of looper thread pull-off (AF). Lead thread behind fabric guard (S) and through eyelet hole of frame looper thread guide (T). Turn handwheel in operating direction until heel of lower looper (V) is all the way to the left; then thread through both eyes from left to right. Left eye of lower looper can be threaded easily if tweezers are in left hand.

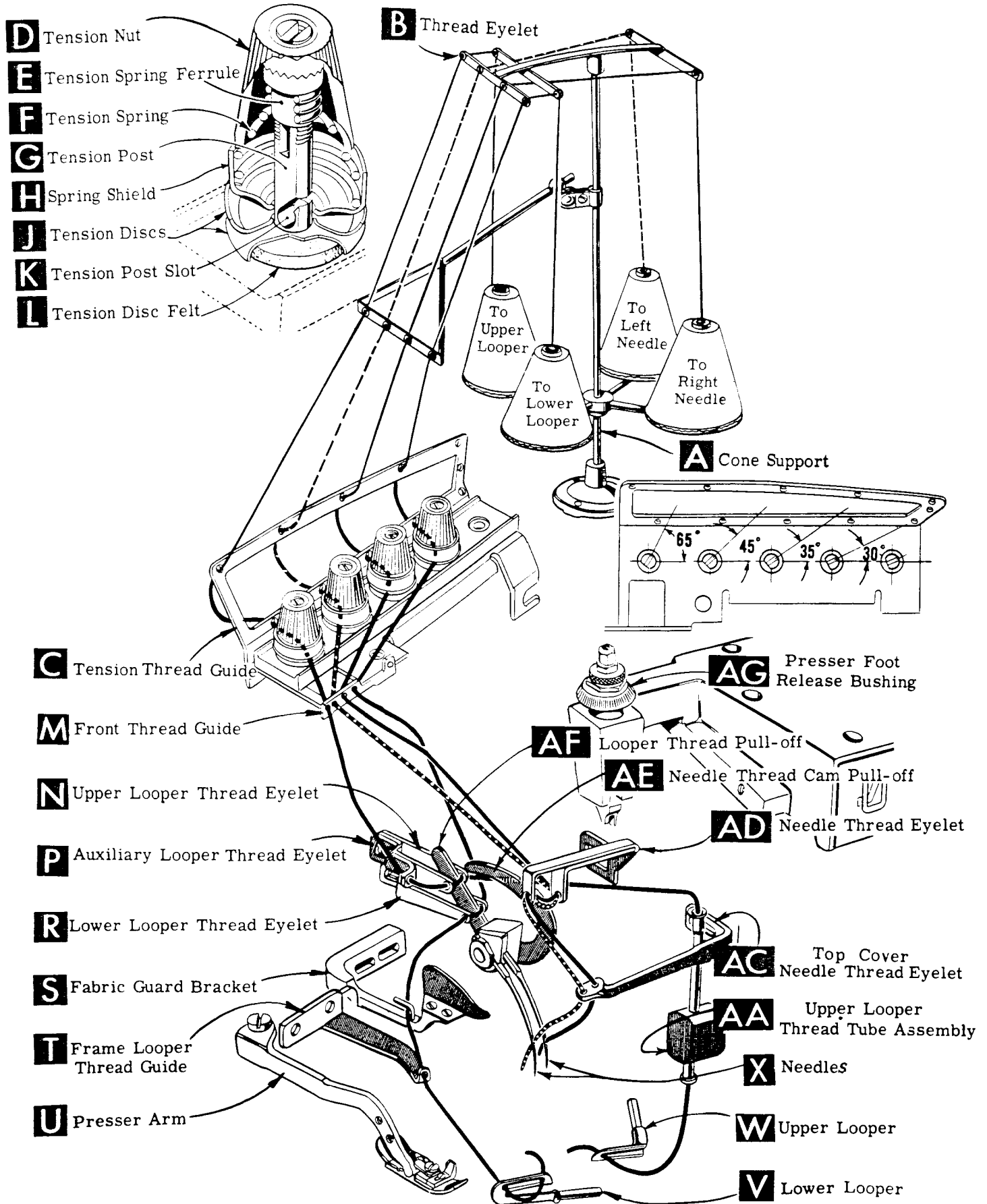
TO THREAD UPPER LOOPER

Turn handwheel until point of upper looper (W) is all the way left. Lead thread through auxiliary looper thread eyelet (P) from back to front, then through both eyes of upper looper thread eyelet (N) from left to right. NOTE: Thread must pass in front of looper thread pull-off (AF). After pulling up upper looper thread tube assembly (AA), lead thread under neck of top cover casting and down through thread tube assembly (AA). Pull thread out bottom of tube; push tube down, then insert thread through upper looper eye from front to back.

CAUTION! Be sure upper looper thread is under lower looper thread when passing from tube assembly to upper looper eye.

TO THREAD THE NEEDLES

Turn handwheel in operating direction until needles (X, Fig. 1) are at their highest position. Insert both needle threads from right to left, through both eyes of needle thread eyelet (AD), under neck of top cover casting; and down through holes in top cover needle thread eyelet (AC). The right needle thread should be threaded through the right hole and the left needle thread through the left hole of the top cover needle thread eyelet. Thread needles from the front.



FOR 695B018

Fig. 1

THREAD TENSION

The amount of tension on the needle and looper threads is regulated by knurled tension nuts (D, Fig. 1). Tension on threads should be only enough to secure proper stitch formation.

PRESSER FOOT PRESSURE

Sufficient presser foot pressure to feed work uniformly should be maintained. Should it be necessary to increase or decrease amount of pressure on presser foot, loosen lock nut (A, Fig. 2) and turn adjusting screw (B). Adjusting screw has a right hand thread so tightening increases pressure, loosening decreases pressure. When pressure adjusting screw (B) has been properly set, tighten lock nut (A). With presser foot resting on throat plate, position locking nut (C) so that its under surface is approximately $1/32$ to $1/16$ inch (.79 to 1.59 mm) from the top surface of adjusting screw (B). Set cap (D) against locking nut (C).

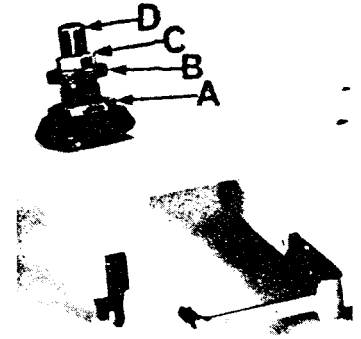


Fig. 2

FEED ECCENTRICS

Feed eccentrics used in machine 695B018 have been selected to produce approximately 10 stitches per inch. It will be noted that on 695B018, the part number of the main feed eccentric is No. 39540 B-12, while the part number of the differential feed eccentric is No. 39540 B-10. Minor numbers of the part symbol indicate approximately the number of stitches obtainable when using that eccentric. Unless otherwise specified, machines will be shipped with the above combination of eccentrics.

Generally speaking, differential (right hand) feed eccentric determines number of stitches produced. Main (left hand) feed eccentric is selected in relation to degree and direction of stretch of material being sewn, or type of operation.

Following stitch number feed eccentrics are available under No. 39540 B-4, -5, -6, -7, -8, -9, -10, -11, -12, -13, -14, -15, -16, -18, -20, -22, -24, -26, -28, -30, -32, -34, -36, -40, -50, -60, -70, -100. Only two eccentrics are supplied with each machine. Additional eccentrics may be ordered separately. To order, use No. 39540 B with a minor number suffixed to indicate number of stitches desired. Example: "39540 B-10".

ASSEMBLING AND ADJUSTING SEWING PARTS

Before assembling and adjusting sewing parts, remove cloth plate, fabric guard, chip guard, upper knife assembly, lower knife holder assembly. Then follow this suggested sequence:

SETTING THE NEEDLES

With throat plate assembled in position, needles should center in the front end of needle slots. When needles are at high position, needle points should be set $31/64$ inch (12.30 mm) above throat plate (Fig. 3). To align needles or set the height above the throat plate, move needle driving arm (A, Fig. 3) by loosening clamp screw (B). Remove throat plate, after needles have been set properly and clamp screw (B) has been tightened.

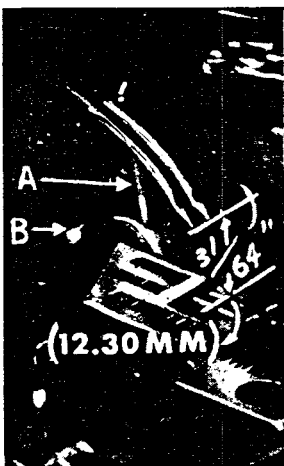


Fig. 3

SETTING THE NEEDLES (Continued)

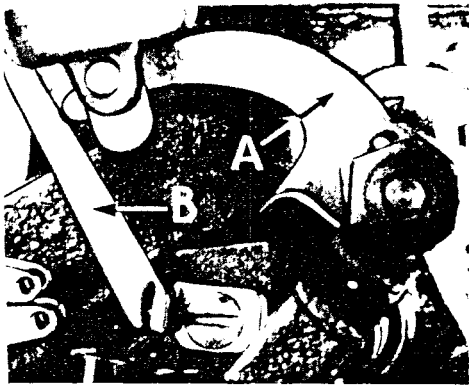


Fig. 4

If needle thread cam pull-off (A, Fig. 4) overlaps looper thread pull-off (B), separate by moving looper thread pull-off back. When retightening looper pull-off screw, be sure to take up end play in needle driving arm.

At this point, insert lower looper (A, Fig. 5) into bar (B). With the lower looper at the left end of its stroke, set looper point $1/16$ inch (1.59 mm) from center of left needle (Fig. 5), using looper gauge No. 21225-1/16. Do not have lower looper deflecting needle. Tighten nut (C).

Now assemble differential (front) feed dog.

SETTING THE REAR NEEDLE GUARD

Set rear needle guard (A, Fig. 6) as high as possible, without interfering with either lower looper or movement of lower knife holder, but still in position to deflect needles forward .002-.004 inch (.051-.102 mm). Screw (B) is used to set rear needle guard. Make sure there is no interference between rear needle guard and lower looper.

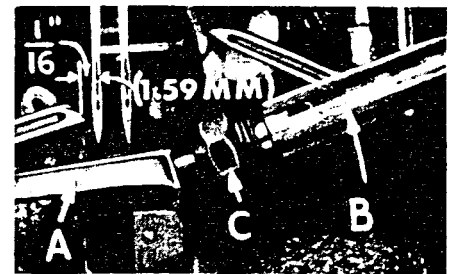


Fig. 5

SETTING THE LOWER LOOPER

Now, finish lower looper adjustment. As lower looper moves to the right, its point should be set into the scarf of the left needle (A, Fig. 7) until the needles spring forward from rear guard surface another .002-.004 inch (.051-.102 mm).

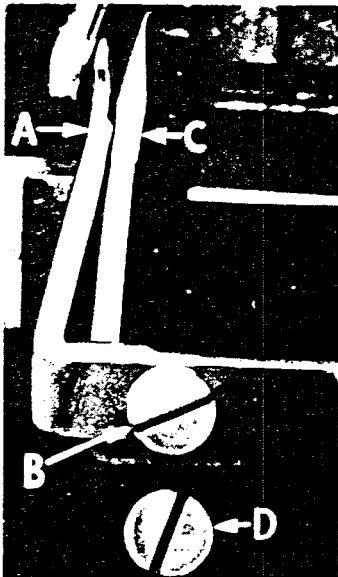


Fig. 6

SETTING THE FRONT NEEDLE GUARD

Assemble front needle guard (C, Fig. 6). When lower looper is springing needles off rear needle guard, set front needle guard as close as possible to needles without touching. Screw (D) is used to adjust and set front needle guard. After this setting, make sure there is no interference between needle guards and differential feed dog.

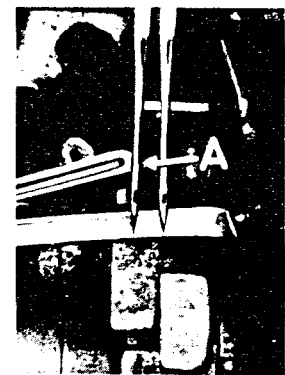


Fig. 7

SETTING THE UPPER LOOPER

Insert upper looper (A, Fig. 8) in its holder. Screw (B) holds the upper looper in its holder and permits it to be pushed in or out, or turned around its shank. Insert upper looper holder into upper looper shaft, if it is not already in place. Screw (C, Fig. 8) in clamp holds the upper looper holder in the shaft. Locate upper looper in its holder so that the shank extends $1/16$ to $3/32$ inch (1.59 to 2.38 mm).

SETTING THE UPPER LOOPER (Continued)

When the upper looper is at the right end of its stroke, upper looper holder should be set to position upper looper shank slightly back of vertical (Fig. 8).

Be sure there is a clearance between heel of looper and casting. By adjusting looper holder in or out of upper looper shaft and by turning the looper around its shank, set upper looper point to cross lower looper to the left of the lower looper eye with .002 to .004 inch (.051 to .102 mm) clearance (Fig. 9).

Next, turn the handwheel until the upper looper is at the left end of its travel. Check dimensions of upper looper point with respect to the RIGHT needle and throat plate (Fig. 10). Looper point should be $\frac{9}{64}$ inch (3.57 mm) to the left of centerline of RIGHT needle and $\frac{17}{32}$ inch (13.49 mm) above throat plate (Fig. 10). If resetting is necessary, do it by moving the upper looper holder (A, Fig. 10). NOTE: Figure 10 represents the correct dimensional settings.

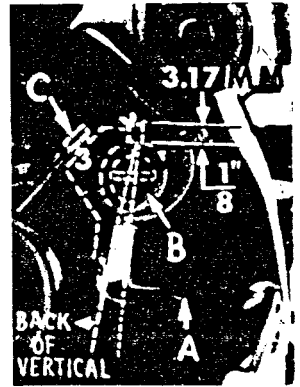


Fig. 8



Fig. 9

Dimension $\frac{17}{32}$ inch (13.49 mm) is increased by turning upper looper holder counterclockwise looking from left end of machine. Dimension $\frac{9}{64}$ inch (3.57 mm) is increased by pulling upper looper holder to the left, out of the upper looper shaft. After these changes are made, it may be necessary to turn the upper looper around its shank slightly to maintain the condition shown in Fig. 9.

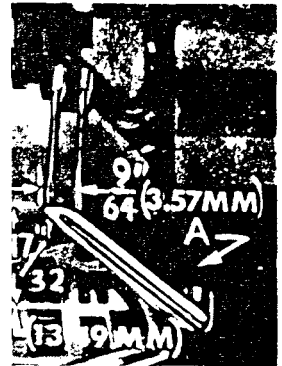


Fig. 10

Check setting to avoid interference between upper looper and needle on needle downstroke. If needle rubs the back of upper looper, pull looper out of its holder slightly and rotate looper a short distance counterclockwise, looking from left end of machine. Reset to maintain machine dimensions specified relative to Figs. 9 and 10.

A quick check of correct settings can be noted as follows: As upper looper is moving to the right and the upper looper eye centers on the RIGHT needle, the eyes of the looper and the needle should align exactly (Fig. 11).



Fig. 11

SETTING THE FEED DOGS

Assemble the main and differential feed dogs (A, B, Fig. 12). Main and differential feed dogs should be leveled with respect to the throat plate by rotating feed tilting adjusting pin (C). This pin raises or lowers the back end of feed bar.

The feed dogs should be set level at the time the teeth first appear above the throat plate. Screw (D, Fig. 12) locks feed

SETTING THE FEED DOGS (Continued)

tilting adjusting pin in place. With the feed dogs at their highest point of travel, the top of the teeth on the main and differential feed dogs (A, B) should be $3/64$ inch (1.19 mm) above the throat plate. The chaining feed dog is made as an integral part of the main feed dog.

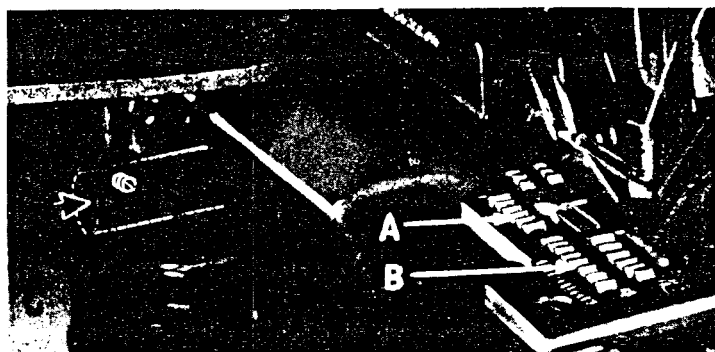


Fig. 12

Lower knife may be secured in any position by tightening screw (B) and locking nut (C) against support bracket. Because screw (B) also serves as latch pin for the cloth plate latch spring, it should always be locked with nut (C) even when screw is not tightened against lower knife holder.

SETTING THE UPPER KNIFE

Replace upper knife assembly. Clamp upper knife (D, Fig. 13) in position, setting nut (E) to hold clamp (F) in its most clockwise position against upper knife. Upper knife chain guard (J) should be positioned so that the guarding section is approximately $1/64$ inch (.40 mm) behind the cutting edge and in contact with the top surface of the upper knife.

At the bottom of its stroke, front cutting edge of upper knife should extend not less than $1/64$ inch (.40 mm) below the cutting edge of lower knife.

After upper knife has been set for the proper width of trim, screw (G) must be tightened to lock the upper knife holding block (H) in place. This will simplify resetting when upper knife is replaced.



Fig. 13

SETTING THE STITCH LENGTH

Length of stitch is determined by the combination of feed eccentrics used. Outer (left) eccentric (A, Fig. 14) actuates main (rear) feed dog; while the inner (right) eccentric (B) actuates the differential (front) feed dog.

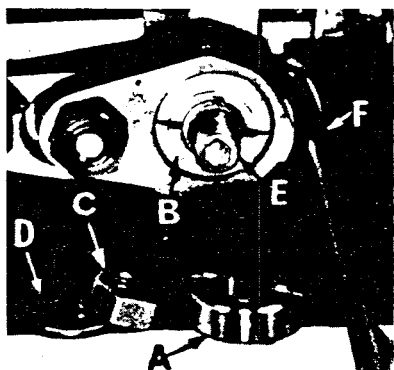


Fig. 14

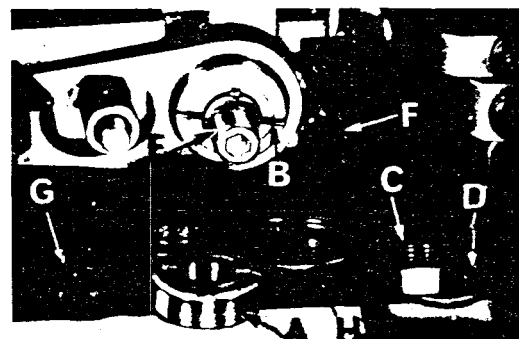


Fig. 15

SETTING THE STITCH LENGTH (Continued)

In assembling the feed eccentrics, be sure hubs are facing each other. Be careful not to damage shaft or key. Tighten nut (C) securely.

To change feed eccentrics, remove nut (C) and washer (D) from end of shaft (E). Turn handwheel in operating direction until key slot in eccentric is toward the front. Using hooked eccentric extractor (F), supplied with machine, reach behind eccentrics as shown and withdraw eccentrics. It may be necessary to move handwheel back and forth slightly during extraction.

If eccentrics are unusually tight fitting, in addition to removing nut (C) and washer (D, Fig. 15) from shaft (E), it may be helpful to remove nut (G) and feed driving connection (H). Then continue as originally suggested.

SETTING THE PRESSER FOOT

Assemble the presser foot to presser arm. With needles in high position, swing presser arm (U, Fig. 1) into sewing position and set the presser foot to align needle holes (front and back) and flat on throat plate. The front edge of needle hole in presser foot must be aligned with front edge of needle hole in throat plate. It is also important that the bottom of the presser foot be flat on the throat plate. If necessary, presser foot can be realigned with throat plate slots by shifting the foot lifter lever shaft (H, Fig. 16). To move the shaft, loosen collar screws (B, Fig. 16) and clamp screw (G) and then shift the foot lifter lever shaft to the left or right as required. Retighten collar screws and clamp screw.

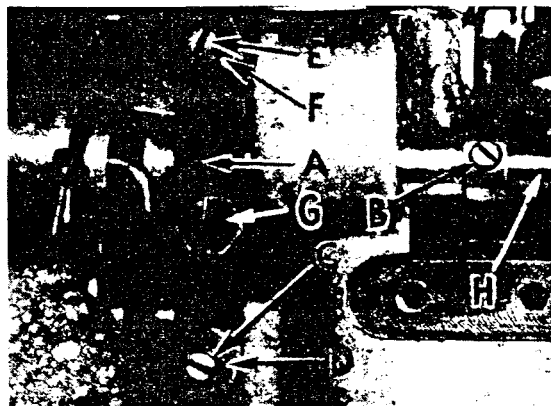


Fig. 16

The foot lifter lever arm (A, Fig. 16) and the collar (B) secure the shaft. Be sure the presser arm does not bind and rise when presser foot release bushing is unlocked. To center presser foot and stitch tongue with respect to throat plate needle hole, loosen presser foot hinge screw.

Adjust lifter lever stop screw (C) so that presser foot can be raised no higher than upper looper will permit; then lock the nut (D). To find this maximum safe position, turn the handwheel so point of upper looper is directly over presser foot tongue. Raise presser foot by depressing the presser foot treadle and manually lower the toe of presser foot. Height adjustment is correct if presser foot tongue does not contact the upper looper. There should be from 1/16 to 1/8 inch (1.59 to 3.17 mm) free motion of foot lifter lever before the presser foot begins to rise. This adjustment is made with screw (E) and locked with nut (F).

Re-assemble chip guard, fabric guard and cloth plate. To make assembly of chip guard easy, turn handwheel until upper knife assembly reaches its highest position.

STARTING TO OPERATE

Be sure machine is threaded according to threading diagram (Fig. 1). With thread tensions light, set looper thread eyelets (N and R, Fig. 1) about horizontal and in the middle of their front to back locations. Operate machine slowly, without presser foot in place, to make sure that chain forms and moves off the tongue freely. Swing presser foot into position, insert material, and sew slowly.

NEEDLE THREAD CONTROL

While sewing on material, check needle thread control as follows: Usually all needle thread is drawn on needle down stroke. At top of needle stroke, thread should be just tight enough to feed chain off stitch tongue. Stitch tends to pull down slightly if excessive thread is pulled on the up stroke. With needle at bottom of stroke, position needle thread eyelet (AD, Fig. 1) so that needle cam pull-off (AE) just contacts needle thread.

LOWER LOOPER THREAD CONTROL

With material under presser foot, set lower looper thread eyelet (R, Fig. 1) back far enough so thread is a little slack when looper thread pull-off (AF) reaches its most rearward position. Looper thread pull-off (AF) is set about 1/8 inch (3.17 mm) distance behind needle thread cam pull-off (AE). Frame looper thread guide (T) should be set with its eyelet approximately 1/8 inch (3.17 mm) to the right of lower looper (V) heel eyelet at the time lower looper is at extreme left end of its travel.

While sewing on material, check drawing off of looper thread as follows: A portion of lower looper thread should be drawn through the tension before lower looper thread comes off upper looper. To increase amount of thread drawn through the tension while lower looper thread is on upper looper, move lower looper thread eyelet (R) down, keeping the same amount of pull-off action.

UPPER LOOPER THREAD CONTROL

Before proceeding to adjust upper looper thread eyelet (N, Fig. 1) balance all four tensions to give a normal appearing stitch. Moderate change in these tensions will not markedly affect the purl.

During needle down stroke, forward stroke of looper thread pull-off (AF) will draw upper looper thread through the tension. When normal amount of looper thread is drawn, upper looper thread will have almost all slack taken up as looper thread pull-off reaches its most rearward position.

POSITIONING THE PURL

To move the purl more under the edge, both looper thread eyelets (N and R, Fig. 1) should be raised keeping the same amount of pull-off. Usually it is better to have slightly more pull-off on upper thread than on lower thread.

If it becomes necessary to move looper thread pull-off (AF), be sure to take up all end play in needle drive shaft before tightening. If upper looper is located so that it is higher over throat plate than recommended in (Fig. 10), the purl will tend to form near the top edge. If upper looper is too low, the purl will form nearer the bottom edge.

THREAD TENSIONS

The needle thread tension required is a function of needle thread and material being sewn. In general, lower looper thread tension should be set as high as possible without causing needle thread to be pulled down. Upper looper thread tension should be increased as long as the elasticity of the chain increases, or until the purl is pulled too far over the top. Keep tensions as light as possible and use eyelets and take-ups to get the proper stitch.

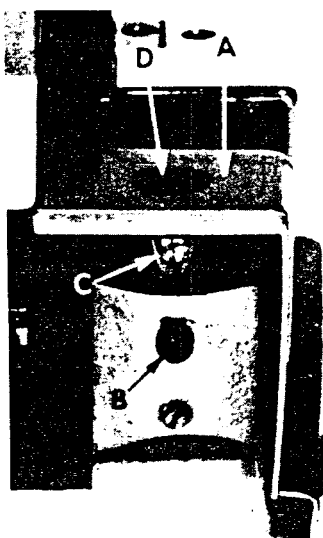


Fig. 17

CLOTH PLATE REMOVAL AND ASSEMBLY

CAUTION: When removing the cloth plate (A, Fig. 17) loosen the cloth plate studlocking screw (B) and lift up cloth plate with the cloth plate stud (C) and cloth plate screw (D), assembled.

In assembly, the cloth plate screw and the cloth plate stud are tightened to the point of removing all play and yet turn in cloth plate. The cloth plate is then assembled to the machine with the flat and "V" slot of the cloth plate stud (C) towards the rear. Stud locking screw (B) is tightened securely which collapses the body of the stud to the screw (D) so that only the cloth plate will turn when opening or closing.

ORDERING REPAIR PARTS

ILLUSTRATIONS

This catalog is arranged to simplify ordering replacement parts. Exploded views of the various sections of the mechanism are shown on the left hand pages so that parts may be seen in their actual positions in the machine. On the right hand pages opposite the illustrations, the parts are listed with descriptions and the quantity of parts required in the particular view being shown.

Numbers in the first column are reference numbers only, indicating position of a part in the illustration. Do not use the reference numbers in ordering.

In the second column in the examples below are the part numbers as listed in this catalog. In the third column is the coded number to be ordered. The prefix "910" must be used. Additionally, letter suffixes generally are transposed as a prefix to the part number.

Components of sub-assemblies which can be furnished as replacements are indented under the description of the main sub-assembly.

The examples below show how to order using parts on Page 19 of this catalog. to illustrate the instructions above:

<u>Ref. No.</u>	<u>Part No.</u>	<u>Order As</u>	<u>Description</u>	<u>Qty.</u>
41	39580 E	910-E 39580	Shim, .028 inch (.71 mm), for throat plate and lower knife support bracket-	1
42	39580 AE	910-AE 39580	Throat Plate and Lower Knife Support Bracket -----	1

ORDERING REPAIR PARTS (Continued)

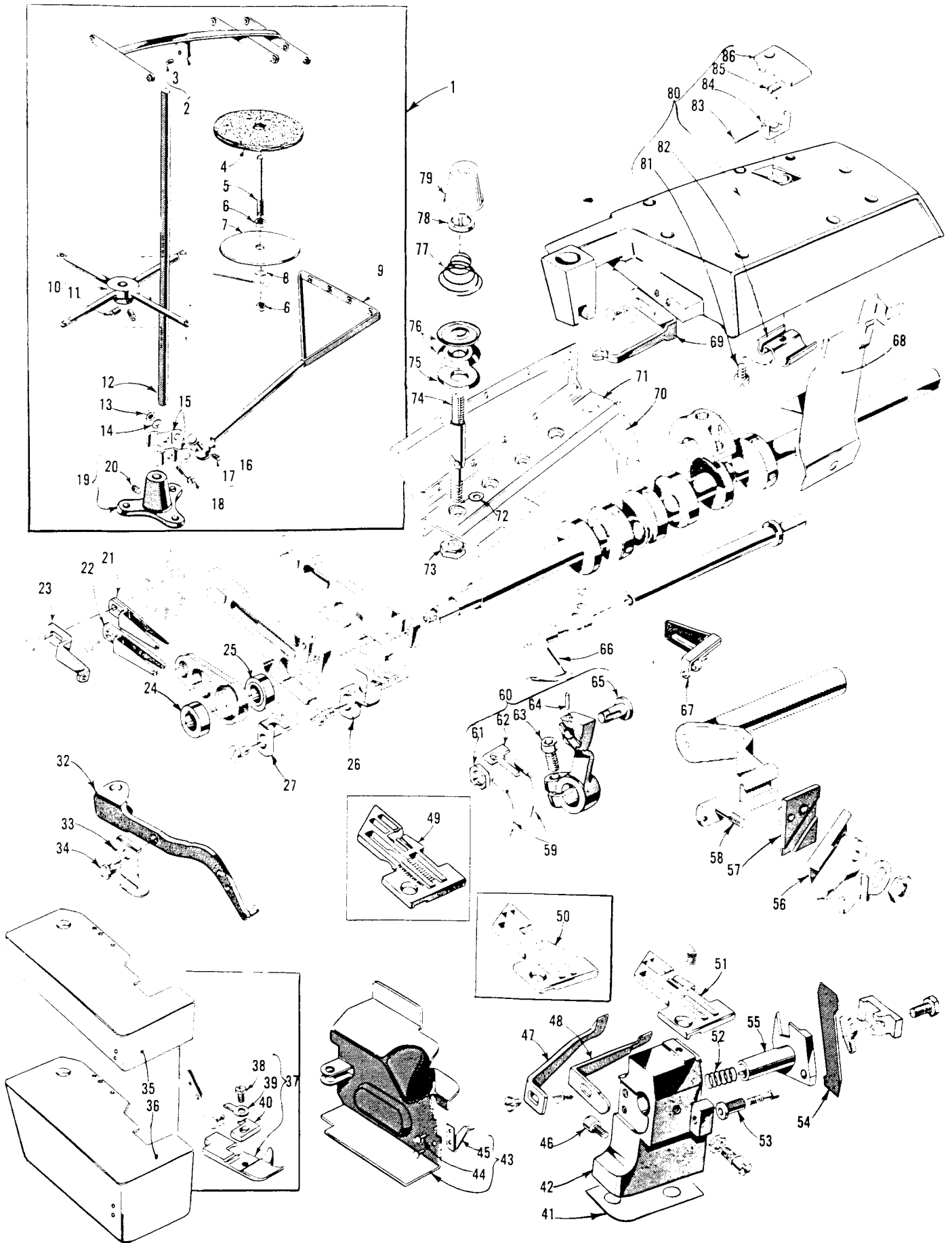
<u>Ref.</u> <u>No.</u>	<u>Part</u> <u>No.</u>	<u>Order</u> <u>As</u>	<u>Description</u>	<u>Qty.</u>
43	39582 GG	910-GG 39582	Side Cover -----	1
44	39582 J	910-J 39582	Rivet -----	1
45	39582 H	910-H 39582	Spring -----	1

Where the parts for all machine varieties covered in this catalog are not the same, the difference will be shown in the illustrations or mentioned in the descriptions. When a part is used in all machines in this catalog, the variety number is not mentioned.

IDENTIFYING PARTS

Where the construction permits, each part is stamped with its part number. On some of the smaller parts, and on those where construction does not permit, an identification letter is stamped in to distinguish the part from similar ones.

PART NUMBERS REPRESENT THE SAME PART, REGARDLESS OF CATALOG IN WHICH THEY APPEAR.



IMPORTANT: BEFORE ORDERING ANY PARTS BELOW, REFER TO THE DETAILED
INSTRUCTIONS ON PAGES 13 AND 14

The parts illustrated on pages 16 and 18 and described on this page and page 19 represent the parts that are used on 695B018, but not used on 695B016.

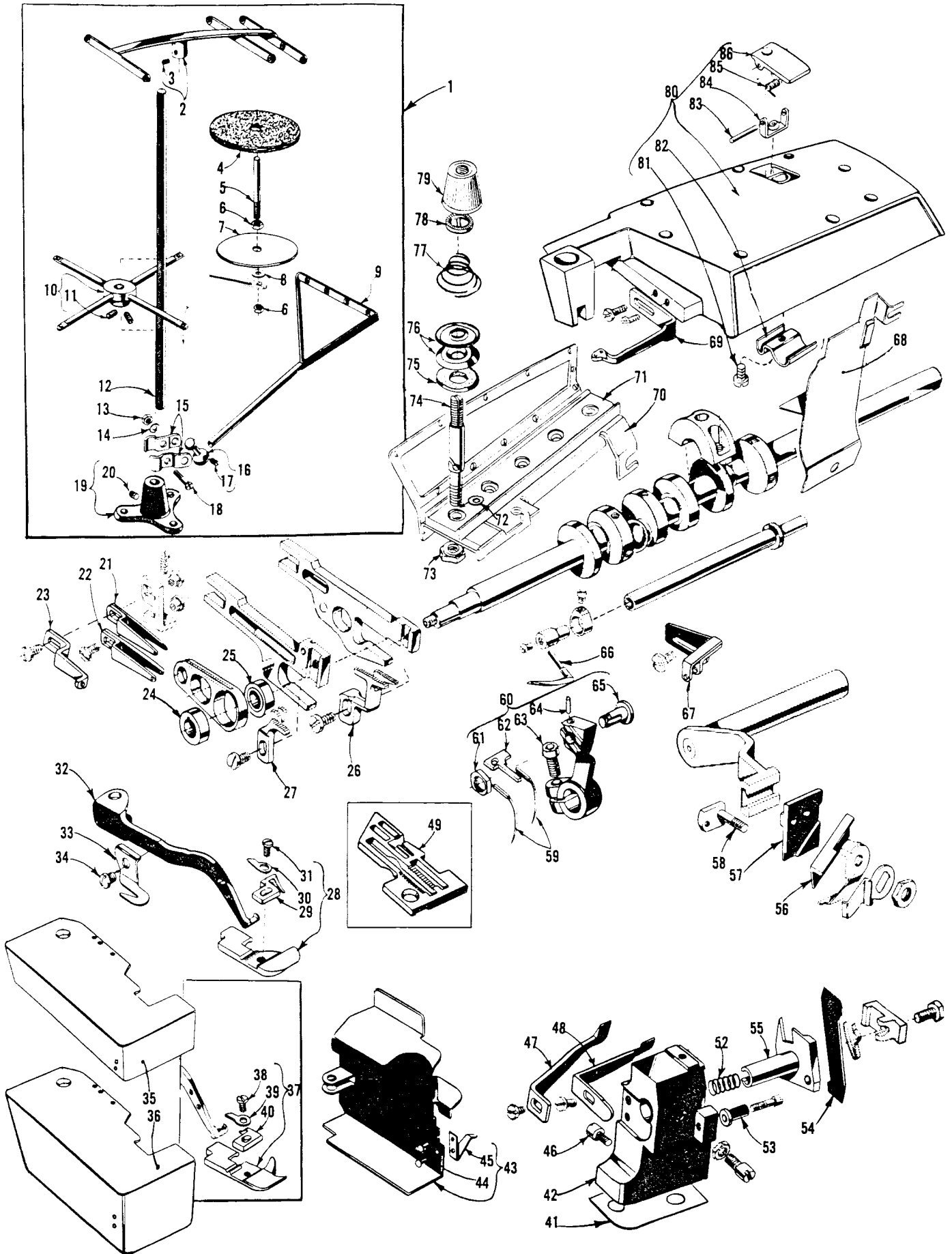
Unless otherwise specified in the description, the parts are used on all the machine styles covered in this catalog. Those parts shown in phantom views and bearing no reference numbers are common to 695B016 and 695B018.

Use Catalog UPD659-78(695B016) for all parts not illustrated or described in this catalog.

Reference numbers that are inside a bracket or box on the picture plates and have indented descriptions, indicate they are components of a complete part or assembly.

<u>Ref. No.</u>	<u>Part No.</u>	<u>Description</u>	<u>Amt. Req.</u>
1	21101 H-4	Thread Stand, complete -----	1
2	21114 H-4	Eyelet Support -----	1
3	22651 CD-4	Screw, for eyelet support -----	1
4	21104 V	Pad, for thread cone -----	4
5	21114 W	Spool Pin -----	4
6	258 A	Nut, for spool pin -----	8
7	21114	Spool Seat Disc -----	4
9	21114 S-4	Lead Eyelet -----	1
10	21114 D-4	Spool Seat Support -----	1
11	22651 CD-5	Screw, for spool seat support -----	2
12	21104 B-20	Thread Stand Rod -----	1
13	21104 H	Nut, for lead eyelet ball split socket -----	1
14	652-16	Washer, for lead eyelet ball split socket -----	1
15	21114 U	Lead Eyelet Ball Split Socket -----	2
16	21114 T	Lead Eyelet Socket Ball -----	1
17	22651 CD-4	Screw, for lead eyelet socket ball -----	1
18	22810	Screw, for lead eyelet ball split socket -----	1
19	21114 A	Thread Stand Base -----	1
20	22651 CD-4	Screw for thread stand base -----	1
21	39568 L	Upper Looper Thread Eyelet for 695B018 -----	1
22	39568 B	Lower Looper Thread Eyelet for 695B018 -----	1
23	39568 E	Auxiliary Looper Thread Eyelet for 695B018 -----	1
24	39540 B-12	Main Feed Driving Eccentric for 695B018 -----	1
25	39540 B-10	Differential Feed Driving Eccentric for 695B018 -----	1
26	39526 W	Differential Feed Dog, marked "AT", 12 teeth per inch, for 695B018 -----	1
27	39505 W	Main Feed Dog, marked "W", 12 teeth per inch, for 695B018 -----	1
32	39556 F	Presser Arm, for 695B018 -----	1
33	39556 K	Chain Cutting Knife, marked "J" -----	1
34	22704	Screw, for chain cutting knife -----	1
35	39501 DC	Cloth Plate, for semi or fully submerged installation ----	1
*36	39501 EC	Cloth Plate, for non-submerged installation -----	1
37	39520 W	Presser Foot, for 695B018 -----	1
38	22768 B	Screw, for hinge spring and stitch tongue -----	1
39	39530	Hinge Spring -----	1
40	39597 W	Stitch Tongue, marked "EF" -----	1
41 to 87		See following page	

* Will be furnished in place of No. 39501 DC if non-submerged installation is specified.



IMPORTANT: BEFORE ORDERING ANY PARTS BELOW, REFER TO THE DETAILED INSTRUCTIONS ON PAGES 13 AND 14

<u>Ref. No.</u>	<u>Part No.</u>	<u>Description</u>	<u>Amt. Req.</u>
1 to 40		See preceding page	
41	39580 E	Shim, .028 inch (.71 mm), for throat plate and lower knife support bracket -----	1
42	39580 AE	Throat Plate and Lower Knife Support Bracket -----	1
43	39582 GG	Side Cover -----	1
44	39582 J	Rivet -----	2
45	39582 H	Spring -----	1
46	22585 G	Latch Screw, for side cover-----	1
47	39525 M	Needle Guard, front-----	1
48	39525 N	Needle Guard, rear -----	1
49	39524 W	Throat Plate, marked "AN", for 695B018 -----	1
52	39550 E	Knife Holder Spring, for 695B018 -----	1
53	39550 C	Lower Knife Holder Locating Stud for 695B018 -----	1
54	39549 J	Lower Knife -----	1
55	39550 U	Lower Knife Holder -----	1
56	39570 J	Upper Knife -----	1
57	39572	Upper Knife Holder Block for 695B018 -----	1
58	39571 D	Upper Knife Clamp Stud, for 695B018 -----	1
59	Cat. 1431	Needle -----	2
60	39552 AC	Needle Driving Arm, marked "N" -----	1
61	14077 A	Nut, for needle clamp stud -----	1
62	39551 G	Needle Spacer -----	1
63	22596 E	Clamp Screw -----	1
64	61351 K-625	Pin -----	1
65	39551 J	Needle Clamp Stud -----	1
66	39508 A	Upper Looper, marked "CC", for 695B018 -----	1
67	39563 H	Needle Thread Eyelet, for 695B018 -----	1
68	39578 U	Chip Guard -----	1
69	39563 W	Top Cover Needle Thread Eyelet -----	1
70	39592 AG-5	Tension Post Mounting Bracket -----	1
71	39592 AN	Tension Post Bar -----	1
72	8372 A	Washer, for tension post -----	4
73	39592 AH	Nut, for thread tension post -----	4
74	39592 AL	Tension Post -----	4
75	39592 AF	Tension Disc Felt -----	4
76	39592 AD	Tension Disc -----	8
77	39592 AR-4	Looper Thread Tension Spring -----	2
-	39592 AR-8	Needle Thread Tension Spring -----	2
78	39592 AK	Tension Spring Ferrule -----	4
79	39592 Z	Left Needle Thread Tension Nut, yellow -----	1
-	39592 AA	Right Needle Thread Tension Nut, green -----	1
-	39592 AB	Upper Looper Thread Tension Nut, blue -----	1
-	39592 AC	Lower Looper Thread Tension Nut, red -----	1
80	39582 AK	Top Cover -----	1
81	22562 A	Screw, for oil guard -----	1
82	39582 W	Oil Guard -----	1
83	51-103 Blk.	Hinge Pin -----	1
84	39582 AG	Hinge Bracket -----	1
85	39582 V	Spring -----	1
86	39582 AF	Oil Filler Cover -----	1

